

# SasView Tutorials

## Getting Started with SasView

[www.sasview.org](http://www.sasview.org)

## Preamble

SasView was originally developed by the University of Tennessee as part of the Distributed Data Analysis of Neutron Scattering Experiments (DANSE) project funded by the US National Science Foundation (NSF), but is currently being developed as an Open Source project hosted on GitHub and managed by a consortium of scattering facilities. Participating facilities include (in alphabetical order): the Australian National Science & Technology Centre for Neutron Scattering, the Diamond Light Source, the European Spallation Source, the Institut Laue Langevin, the ISIS Pulsed Neutron & Muon Source, the National Institute of Standards & Technology Center for Neutron Research, the Oak Ridge National Laboratory Neutron Sciences Directorate, and the Technical University Delft Reactor Institute.

SasView is distributed under a 'Three-clause' BSD licence which you may read here: <https://github.com/SasView/sasview/blob/master/LICENSE.TXT>

SasView is free to download and use, including for commercial purposes.

© 2009-2019 UMD, UTK, NIST, ORNL, ISIS, ESS, ANSTO, ILL, TUD, DLS

## If you make use of SasView

If you use SasView to do productive scientific research that leads to a publication, we ask that you acknowledge use of the program with the following text:

*This work benefited from the use of the SasView application, originally developed under NSF Award DMR-0520547. SasView also contains code developed with funding from the EU Horizon 2020 programme under the SINE2020 project Grant No 654000.*

## Contributors to this Tutorial

Steve King (stephen.king@stfc.ac.uk)

## Revisions

Original version: 28 March 2019

Last revised: 29 October 2021 (change of hyperlink)

## Learning Objective

This tutorial will guide you through the installation of SasView and familiarise you with the programs user interface.

## Supported Platforms

At the time of writing SasView will run on:

### Windows

SasView 2.x:	32-bit only
SasView 3.x and later:	32-bit & 64-bit

### Mac OS

SasView 3.x and earlier:	32-bit OSX (10.6, Snowleopard)
SasView 4.x and later:	64-bit OSX (10.9, Mavericks or later)

We do not currently support a Linux distribution, but some Users have successfully compiled and built SasView on Debian from our source code on GitHub. See [https://github.com/SasView/sasview/wiki/DevNotes\\_Projects\\_Debian](https://github.com/SasView/sasview/wiki/DevNotes_Projects_Debian) .

## Installing SasView





Open a web browser and navigate to <http://www.sasview.org/>

If you only wish to install the most recent release of SasView, simply select '**Links and Downloads**' and then click on the link '**Current release version of SasView 4**'.

If you want to install earlier releases of SasView, click on the link '**All versions from 3.0**'.

Scroll down whichever webpage you are looking at until you find the '**Downloads**' section for the release you require.

### Downloads

 <a href="#">SasView-4.1-MacOSX.dmg</a>	157 MB
 <a href="#">setupSasView-4.1.exe</a>	76.5 MB
 <a href="#">Source code (zip)</a>	
 <a href="#">Source code (tar.gz)</a>	

Then, either:

Click on the **.dmg** link to download a Mac OSX disk image file and drag this into your Mac '**Applications**' folder.

or

Click on the **.exe** link to download a Windows installer and once the download is complete, run the installer.

*Note: depending on the computer you are using installation on Windows may require Administrator-level permissions. If so, please contact your local IT Help Desk.*

**Avoid using installation folder paths which contain spaces, non-Latin characters or characters not available on a standard keyboard.**

## Running SasView

### Windows

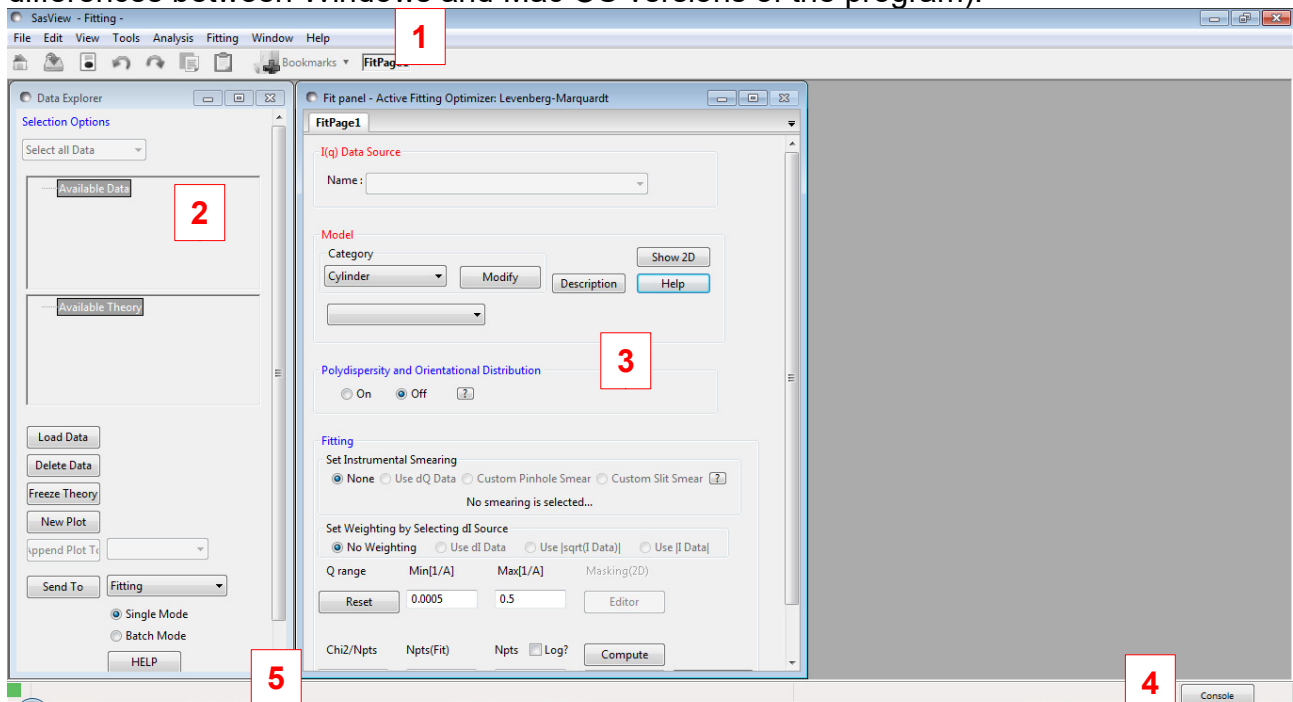
Either select SasView from **'Start' > 'All Programs'** or, if you asked the installer to create one, double-click on the SasView desktop icon.



### Mac OS

Go in to your **'Applications'** folder and select SasView.  
(Also see the Appendix)

SasView should start and present you with a screen something like this (there will be small differences between Windows and Mac OS versions of the program):



## A Quick Tour of the SasView GUI

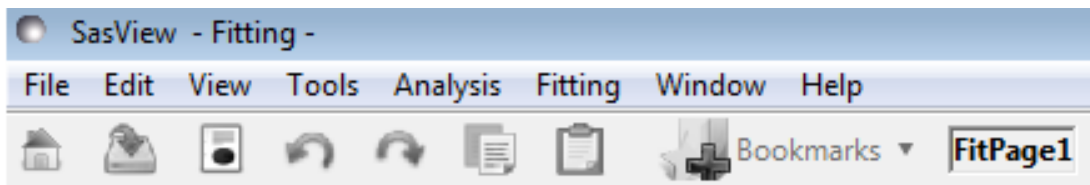
There are five elements to the initial SasView screen:

1. A **Menu Bar** and a **Toolbar** of icons
2. A **Data Explorer** panel
3. A **Fit Page**
4. The **Console** button
5. The **Status Bar**

We shall now look at each of these in turn. You may wish to follow the remainder of this document with an instance of SasView running so that you can activate menus and buttons.

### Menu Bar / Toolbar

As in many other applications the Menu Bar gives access to features of the program. Common operations are available through an iconised shortcut.



#### *File*

Here you can load one or more individual data files, or an entire folder of data files into SasView. You can also save a current analysis or entire SasView session to file and then re-load them.

#### *Edit*

Here you can copy/paste analysis parameters between analysis pages - useful when configuring multiple Fit Pages for, say, simultaneous fitting – or export the parameters to file.

If an analysis has been performed **Report Results** will prepare a report that can be saved/printed.

#### *View*

Here you can hide/show the **Toolbar**, the **Data Explorer**, and the **Batch Fitting Results Panel**

**Startup Setting** allows you to choose whether or not SasView remembers the current configuration of the program and which folder you last loaded data from.

**Category Manager** allows you to re-organise the library of fitting models to your own preference.

## Tools

Here you will find a collection of various utilities:

### **Data Operation**

Allows you to add, subtract, multiply, divide, or append two separate datasets.

### **SLD Calculator**

Calculates the neutron scattering length densities and electron densities of a given chemical formula.

### **Density/Volume Calculator**

Converts between the molar volume and mass density of a given chemical formula.

### **Slit Size Calculator**

Calculates the slit length for smearing purposes (as half the FWHM) from a SAXS beam profile.

*Note: this tool has only been validated for Anton-Paar SAXSess beam profile data.*

### **Kiessig Thickness Calculator**

Calculates the Kiessig thickness from the Q-value of a fringe in a reflectivity profile, or the d-spacing from the Q-value of a peak in SAXS/SANS data, as  $2\pi/Q$ .

### **Q Resolution Estimator**

Estimates the Q-resolution of SAXS/SANS data from given instrumental parameter values, assuming that the detector is flat and normal to the incident beam.

### **Generic Scattering Calculator**

Attempts to simulate the SANS expected from a specified shape/structure or scattering length density profile. The tool can handle both the nuclear and magnetic contributions to the scattering.

### **Python Shell/Editor**

Opens a Python 2.7 shell and editor; useful for editing and testing plug-in fitting models.

### **Image Viewer**

This tool loads and displays 2D SAS image data as X-Y pixel coordinates versus whatever the 'intensity' value is per pixel). The supported input image formats are: BMP (bitmap format), GIF (graphical interchange format), JPG (joint photographic experts group format), PNG (portable network graphics format), and TIF (tagged image format).

The displayed 2D plot can then be copied, printed, or re-saved as any of the above formats or as PS (postscript), EPS (encapsulated postscript), PDF

(portable document format), RAW/RGBA (raw rgba bitmap), or SVG (scaleable vector graphics).

If the min/max Q limits of the X-Y axes are known this tool will also convert the image to pseudo-data, for example, for 2D fitting or further manipulation.

### **File Converter**

This tool can be used to convert 1D or 2D datasets where the Q and intensity values are stored in separate files – for example, BSL/OTOKO format data and some other obscure SAXS data formats - into SAS standard datafiles (CanSAS XML for 1D data and NxcanSAS HDF for 2D data) that can then be loaded by SasView.

## *Analysis*

Here you can also select the type of analysis you wish to perform:

### **Fitting**

Performs optimised model-fitting on one or more datasets, with or without constraints, polydispersity or orientation distributions, or resolution smearing.

### **Pr Inversion**

Calculates the distance distribution function – or 'P(r) curve' - for a dataset.

### **Invariant**

Calculates the Porod Invariant (sometimes denoted as  $Q^*$ ) - or 'Total Scattering' - for a dataset.

### **Correlation Function**

Calculates the 1D density correlation function for a dataset.

If the data is from a sample that can be described by idealised lamellar morphology this analysis will also attempt to extract some morphological information from the correlation function; eg, lamellar spacing, crystallinity, etc.

## *Fitting*

Provides access to advanced model-fitting options.

Here you can set up parameter constraints between Fit Pages or simultaneous fits, change the default fitting optimiser used by SasView, test/enable/disable fitting computations using OpenCL (a means of speeding up some complex fits by taking advantage of any high-performance graphics card processor installed in your computer), and create/manipulate/delete plug-in fitting models.

## *Window*

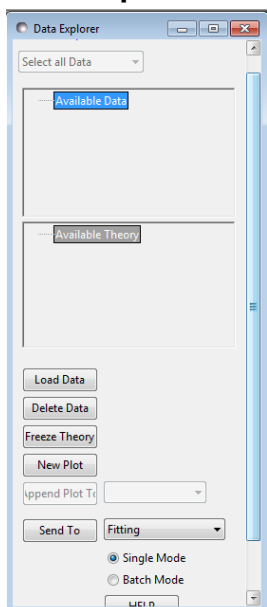
Here you can switch between, and arrange, the various SasView windows that are in use.

## Help

Here you can access the extensive SasView help **Documentation** and these **Tutorials**.

You can also check to see if there is a more recent release of SasView, or browse the **Model Marketplace** to look for additional fitting models (these options will require an internet connection).

## Data Explorer

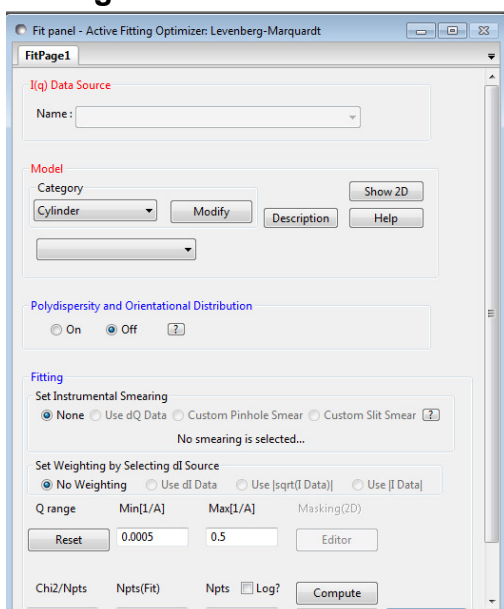


From the Data Explorer panel you can load data into SasView, plot it and delete it, and choose which type of analysis you wish to perform on the data.

There are two types of data in SasView: data that has been loaded in, and fitting model calculations made by SasView itself. Snapshots of the latter appear as 'Theory' datasets in the Data Explorer.

The Data Explorer is also where you can decide whether to fit one dataset interactively ('Single Mode'), or have SasView fit multiple datasets automatically ('Batch Mode').

## Fit Page



A Fit Page is the functional hub of SasView, and you can have as many as you have datasets to fit!

The Fit Page is where you select the model – formally the form factor,  $P(Q)$  – you wish to fit to the data and, if applicable, where you can also choose to include a structure factor,  $S(Q)$ , contribution.

If the chosen model has parameters that are allowed to be polydisperse (ie, have a distribution of values about a mean value), and/or that requires orientation angles to describe scattering from aligned objects, these can all be set from the Fit Page.

The Fit page is also where you can instruct SasView about how it should take account of 'Instrumental Smearing' (uncertainties on the  $Q$  values), 'Weighting' (uncertainties on the intensity values), the  $Q$ -range over which to fit the data (since it may be advantageous to exclude the extreme low- $Q$  or extreme high- $Q$ ), how many datapoints to use in the fitting model calculation, and whether these datapoints should be equally spaced in  $Q$  (default) or logarithmically distributed (often useful for highlighting features at low- $Q$ ).



Fits are initiated by clicking the **Fit** button. But the Fit Page can be used in a simulation mode when no data has been loaded by selecting a model and some parameters and clicking the **Compute** button.

### **Console**

The **Console** button provides access to a chronological history of (in increasing order of severity) *information*, *warning*, and *error* messages output by the SasView program.

### **Status Bar**

The Status Bar is used to report selected information directly to the SasView GUI in real time; for example, whether or not a fit is in progress and how long until it completes, or whether a fit completed successfully or the fitting optimiser failed to converge on a satisfactory solution.

## **The SasView Log File**

SasView also creates/appends to a log file whenever the program is used. Whilst the information it contains may not always be straightforward to understand, if you are having serious problems with the program it would be a good idea to attach this file to any request for help from the SasView Development Team!

The log file is located in your user account 'home' folder, so on:

Windows

C:\Users\{your\_userid}\sasview.txt

Mac OS

~/sasview.txt

## **Further Information**

For further information, please consult the

**SasView Tutorial Series**

or

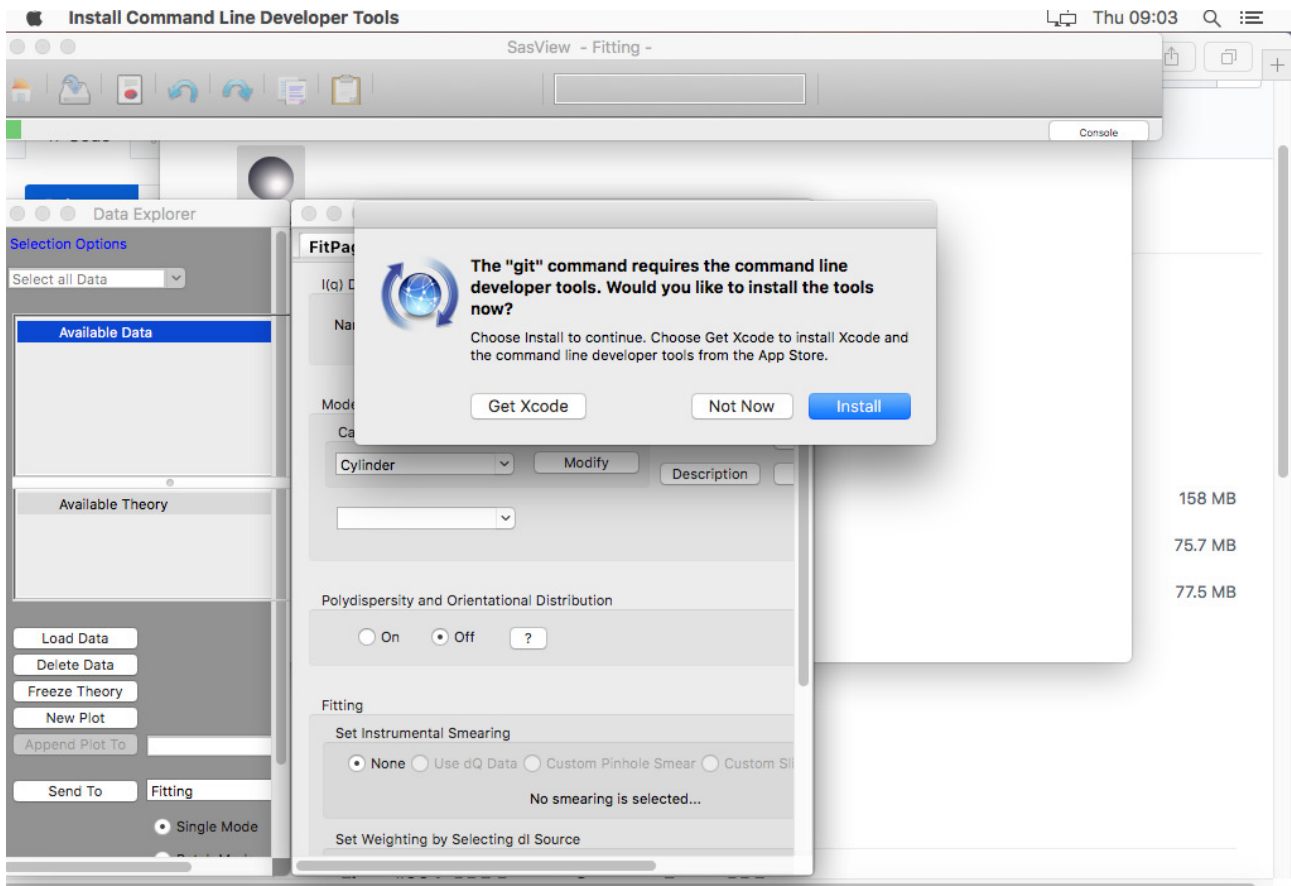
<http://www.sasview.org>

or email

[help@sasview.org](mailto:help@sasview.org)

## Appendix

Mac OS users installing SasView for the first time may encounter a popup dialog like this:



If this happens, please click *Get Xcode*.

Some functionality in SasView needs a C compiler. Xcode is a development environment for Mac OS that provides one.

<https://en.wikipedia.org/wiki/Xcode>

[https://wiki.wxwidgets.org/Installing\\_Xcode](https://wiki.wxwidgets.org/Installing_Xcode)